



Volume 1 | Issue 2
December 2020

“Still here, still raising puppies, training teams, and serving our community.”

BOARD OF DIRECTORS

Dara Fukuhara
Chair

Sandra Meehan
Vice-Chair

Col. (Ret.) Chuck Cardinal
Treasurer

Susan Tamashiro
Secretary

John Seely
At-Large

JoAnn Yuen
At-Large

STAFF

Matthew Lorin
Executive Director

Susan Luehrs
Program Director

HAPPIEST OF HOLIDAYS TO EVERYONE!

It is time to celebrate, to be joyous and of good cheer -- if only that this challenging calendar year is coming to a close. Look forward to 2021 with hope and renewed spirit.

Everyone, and I mean everyone, discovered or rediscovered grit this year. We wished Charlene Hasebe blessed travels as she crossed over and said thank you to Jim Kennedy for his years of service and unwavering leadership. We confronted ourselves, many of our greatest fears and, in most cases, stared our demons down. This is no small achievement. We all have reason to draw strength and hope from our resilience.

Of course, we appreciate all the human effort but would not be speaking truth if we didn't recognize

our dogs and every little thing they do to lend purpose to our lives. As Susan likes to remind me; "Those who teach us the most about humanity aren't always human."



Well intentioned platitudes notwithstanding, would be hard to paint a picture of a pleasant year and get anyone to believe me. It has been tough all around. Still, thanks to our loyal puppy raisers, supportive donors, committed Board members and our resolute Founder, Susan Leuhrs, we not just survived, we thrived.

We end this year in the black, having raised, received and worked for exactly the amount we spent. A "Wow" and a 'Cheehoo" are in order.

We look forward to 2021, continuing our work, strengthening our friendships and supporting our clients. We hope you will continue your steadfast support. Finally, as a Friends of Hawaii Charities charitable grant recipient, we are honored to participate in its fundraising opportunity, offered in conjunction with the Sony Open PGA TOUR tournament. You can support Hawaii Fi-Do today and give us a boost between **now to January 20, 2021**, HST! Your donation to us through friendsofhawaii.org will trigger a bonus boost to your gift from funds raised at the Sony Open by Friends of Hawaii Charities.

Matt Lorin
Executive Director

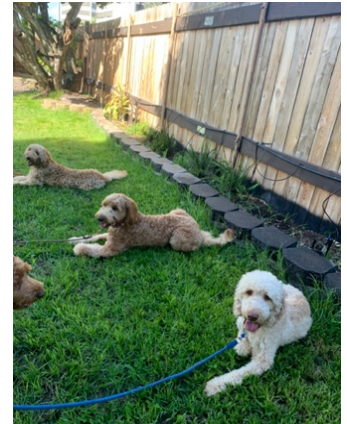
2020 SUSAN VIEW OF A NOT SO MUCH FUN YEAR.



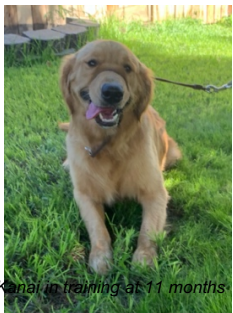
Can't say much more about 2020 that hasn't been said, so enough already!!! Let's get on with 2021, which we know will be better.

Our training, socialization, public education and the many wonderful community visits to schools, care home and hospitals were all cut short this year and we sure do miss them. Our wonderful volunteers have been great in continuing training and exercising their foster pups as well as participating in our zoom sessions.

Having a litter of labradoodle in February kept me sane but the lack of puppy interaction over the months had an effect on everyone especially the pups who are now 9 months old. We stopped our community training for the time being and have become very creative in giving our program dogs solo experiences wherever we can.



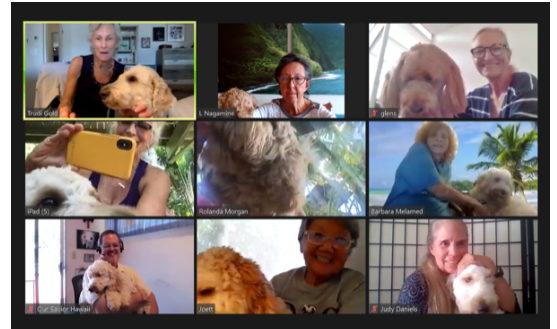
Back yard training sessions for the 'L' litter



Kanai in training at 11 months

I still get and answer many emails and phone calls daily from people not only wanting skilled service dogs but asking great questions on the legal aspect of dogs in public, training requirements, ADA law and other training resources that we are happy to share anytime.

We had several program dogs matched with clients in 2020 but due to the pandemic, we did it COVID-style, trying our best to get through this with grace. We needed to move online for funding, we will need more people to see our work... to be aware. Thanks for hanging in there with us.



OUR 2020 GRADUATES



2020 Facility Team with Tammy and Greta

When things get back to our new normal this team will be visiting Ronald McDonald House, work with the foster kids program and some of the youth we hope to get back to in 2021.

Certified working team of Bianca and service dog Hapa who assist in everyday life skills by retrieving objects and helping with mobility.



Bianca Frisby and Hapa

Congratulations to both of our amazing teams.

OUR FIRST, LAST AND ONLY SERVICE DOG EDUCATIONAL "GIG" IN 2020



Kupuna Network on Spectrum

Thank you, Kupuna Network on Spectrum TV, for the opportunity to educate our Kupuna's and their families about service dogs in Hawaii, the training and expected behaviors in public and the ADA laws.

Check it out at: Available soon on Spectrum Channel 14 & 1014, Amazon FireTV, Roku TV, YouTube, Facebook, and www.thekupunanetwork.com.



Kupuna Network on Spectrum TV

REMEMBERING CHARLENE



In 2008, Charlene Hasebe and assistant dog Puff were on a mission to share their aloha and educate the public on service dogs to literally thousands of people by visiting hospitals, care homes and our “Reading to Dogs” program over the years.

This fun loving certified working team started out at Wahiawa Hospital visiting all the patients in the hospital and long-term care every Friday which earned her the Governor’s Kilohana Award. Over the years Charlene extended her community service to several more care homes, schools, library programs and anyone who stopped to talk about service dogs.



Charlene passed away in March of 2020 and Puff crossed the Rainbow Bridge a few months later, they will be greatly missed but will always be in our hearts. Aloha ‘oe Charlene and Puff, thank you for the smiles and fun times! A hui hou makou! Until we meet again.

THANK YOU, JIM KENNEDY



Finally, as we say bon voyage, we recognize our friend, longtime Executive Director and committed advocate, Jim Kennedy. In honor of Jim and his profound contribution to the organization, our volunteers, clients and our cause, please meet and welcome Ms. “Missy” Kennedy, named in honor of Jim and his legacy. Please wish them both well.

NEW DEPARTMENT OF TRANSPORTATION RULES FOR SERVICE DOGS

As a gift in his last year of service with Hawaii FiDo, Jim Kennedy worked with ADI and others to advocate for improvements to DOT rules on Air Travel. Recently, the federal government updated those rules. For years, untrained dogs and other animals have posed a threat to passengers with disabilities flying with legitimate service dogs. The new rules update the Air Carrier Access Act, which governs accessibility for air travel. The biggest change is the new definition of “service animal.” It will now align with the Americans With Disabilities Act’s definition. Service animals will now be defined only as dogs, no longer including other types of animals. The dogs must be trained to perform actual tasks that mitigate their human partner’s disability. Emotional support animals will no longer be considered service animals. This means that they will have to travel as pets, in crates or other carriers. The new rules also classify psychiatric service dogs as service animals.

I am grateful for our friends, family, the best volunteers ever, the on-going support from our donors and supporters and the fact that we can still provide, free of charge, skilled certified dogs to people with disabilities in Hawaii.

Happy Holidays!! Stay safe and strong Hawaii FiDo friends. Hug your dogs!

Aloha,

Susan

Program Director

Founder Hawaii FiDo